

**Grŵp Cyfeirio
Rhanddeiliaid
Cymwysterau
Galwedigaethol**

***Vocational Stakeholder
Reference Group***

25 Chwefror/February 2026



Haf 2026

Summer 2026

Chwefror/February 2026



CYMWYSTERAU 2025–2026
Help llaw ar gyfer arholiadau ac asesiadau



Cymorth a Chefnogaeth

Rydyn ni'n deall bod paratoi ar gyfer arholiadau ac asesiadau yn gallu bod yn gyfnod anodd i ddysgwyr, rhieni a gofalfwyr. Mae amrywiaeth eang o adnoddau a chefnogaeth ar gael. Gallwch ddod o hyd i ddolenni i gefnogaeth ychwanegol isod.



P'un a wyt ti'n ystyried parhau ag addysg 0-16, dod yn brentis neu wneud cais am brentisiaeth gradd, mae gan wefan [Gyrfa Cymru](#) wybodaeth ddefnyddiol gyda chanllawiau a chymorth i'th helpu i gymryd dy gamau nesaf.



Os hoffet ti archwilio dy opsiynau mewn coleg addysg bellach yng Nghymru, cer i wefan [Colegau Cymru](#) lle ceir restr o holl golegau Cymru gyda dolenni i'w gwefannau unigol.



Os wyt ti eisiau symud ymlaen i addysg uwch, mae gan wefan [UCAS](#) ragor o wybodaeth am ba gyrsiau sydd ar gael a sut i wneud cais.



QUALIFICATIONS 2025–2026
Your guide to exams and assessments



Help and Support

We understand that preparing for exams and assessments can be a difficult time for learners, parents and carers. There is a wide range of resources and support available. You can find links to additional support below.



Whether you are considering continuing with post-16 education, becoming an apprentice or applying for a degree apprenticeship, the [Careers Wales](#) website has useful information with guidance and support to help you take your next steps.



If you would like to explore your options at a further education college in Wales, visit the [Colegau Cymru](#) website where you'll find a list of all Welsh colleges with links to their individual websites.



If you want to progress into higher education, the [UCAS](#) website has more information on what courses are available and how to apply.



Home > [Education, training and skills](#) > [Further and higher education, skills and vocational training](#)
> [Further and higher education courses and qualifications](#)

Guidance

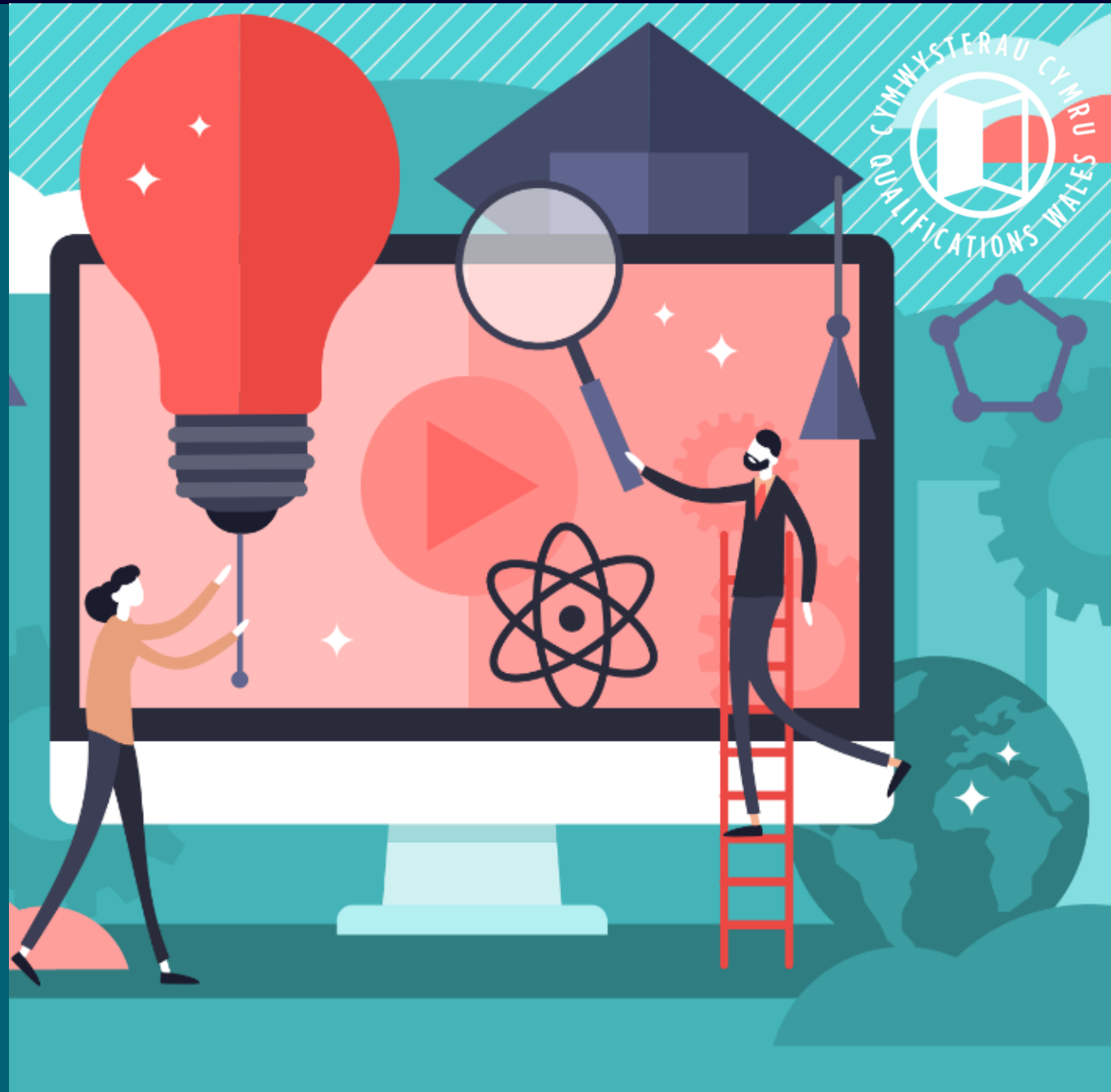
VTQ information hub 2025 to 2026: key dates and deadlines

Information for Level 3, Level 1/2 and Level 2 vocational and technical qualifications used for progression and taken alongside or in place of A-levels and GCSEs.

Cymwysterau Galwedigaeth

Post-16 vocational qualifications

Chwefror/February 2026



Cymwysterau galwedigaethol ôl-16

Y diwygiadau y mae Lloegr yn eu cynnig ar gyfer L2 a L3

- Adolygiad o'r Cwricwlwm a'r Trefniadau Aseu
- dadansoddi'r effaith bosibl i Gymru
- cyfarfodydd Polisi a Diwygio rheolaidd
- cyhoeddi ein Cynllun gweithredu VQ ar gyfer 2026-28 yn y gwanwyn

Dyddiadau gorffen ar QiW ar gyfer cymwysterau cyfredol

- estyniadau yn dod drwodd

Grwpiau Cymwysterau Sector – Wythnosau sy'n dechrau 11 a 18 Mai

Cymwysterau prentisiaethau adeiladu

Post-16 vocational qualifications



England's proposed reforms for L2 and L3

- Curriculum and Assessment Review
- analysing potential impact for Wales
- regular Policy and Reform meetings
- publishing our VQ Action plan for 2026-28 in Spring

End dates on QiW for current qualifications

- extensions coming through

Sector Qualification Groups – Weeks commencing 11th and 18th May

Construction apprenticeships qualifications


CWESTIYNAU? QUESTIONS?

Diolch yn fawr
Thank you

Ymgynghoriadau ar gymwysterau Sgiliau Hanfodol Cymru


Consultation on Essential Skills Wales qualifications

Chwefror/February 2026




Siapio Dyfodol Sgiliau Hanfodol Cymru
Ymgynghoriad ar y Gofynion Dylunio ar gyfer Cymwysterau Sgiliau Hanfodol Cymru newydd

Tachwedd 2025



Shaping the Future of Essential Skills Wales
Consultation on the Design Requirements for new Essential Skills Wales Qualifications

November 2025



Ymatebion i'r Ymgynghoriad

67 o ymatebion i'r prif ymgynghoriad
706 o ymatebion i'r arolwg i ddysgwyr

Cyfleoedd ar gyfer Newid

Mân newidiadau i nodau yn y 3 phwnc

Cymhwyso Rhif:

Gwella cynnwys

Neilltuo cynnwys penodol i uned 1 a 2

Cyfathrebu:

Gwella cynnwys

Rhannu darllen ac ysgrifennu yn 2 uned ar wahân

Digidol:

Gwella cynnwys

Consultation Responses

67 responses to the main consultation
706 responses to the learner survey



Opportunities for Change

Minor changes to aims in the 3 subjects

Application of Number:

Refining content

Assigning specific content to unit 1 and 2

Communications:

Refining content

Split reading and writing into 2 separate units

Digital:

Refining content

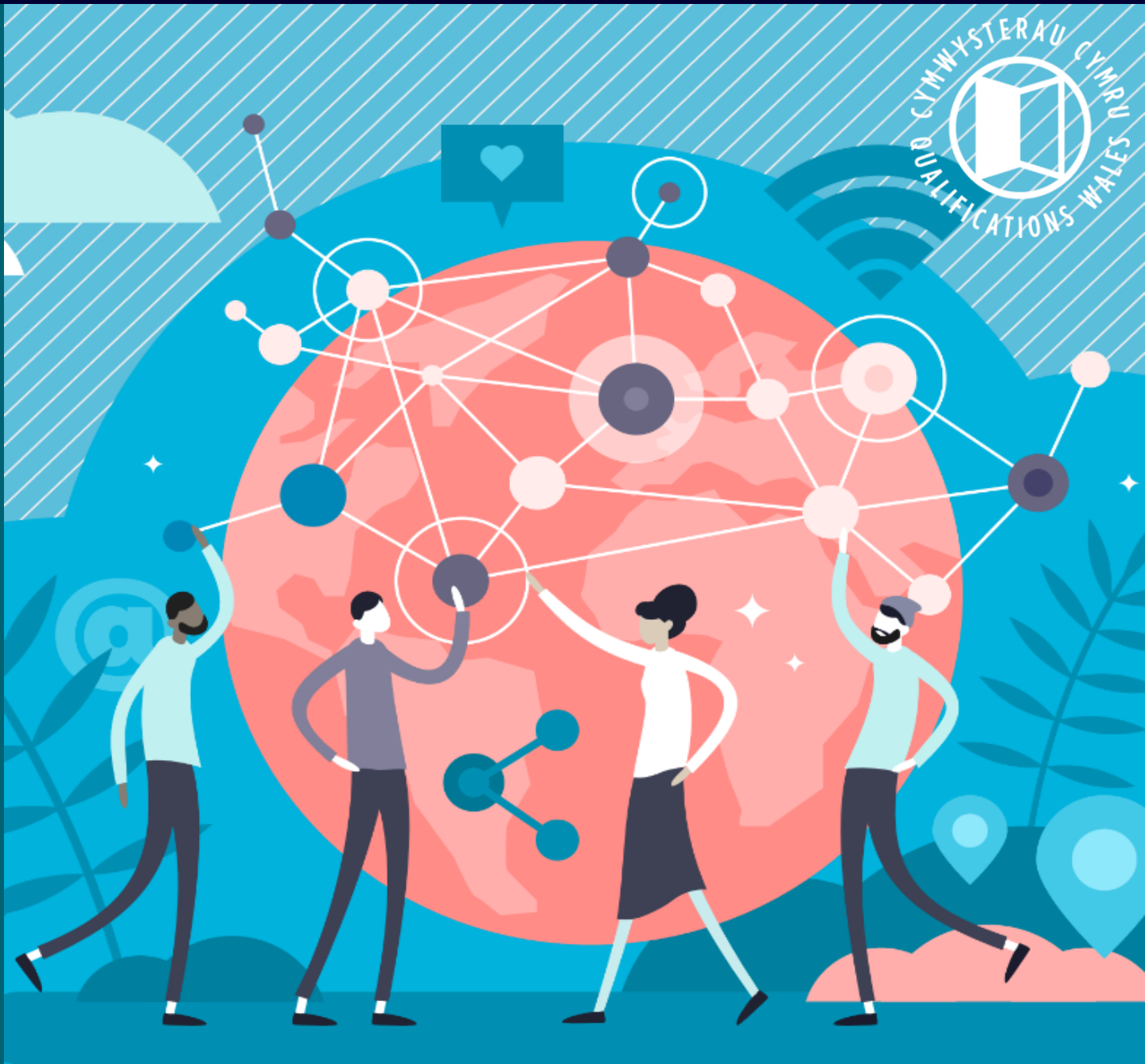
CWESTIYNAU? **QUESTIONS?**

Diolch yn fawr
Thank you

**Diweddaraiddau eraill
CC**

Other QW updates

Chwefror/February 2026



TGAU Saesneg Iaith/TGAU Cymraeg Iaith (ôl-16)

[Meini-prawf-cymeradwyo-tgau-cymraeg-iaith-ôl-16.pdf](#)

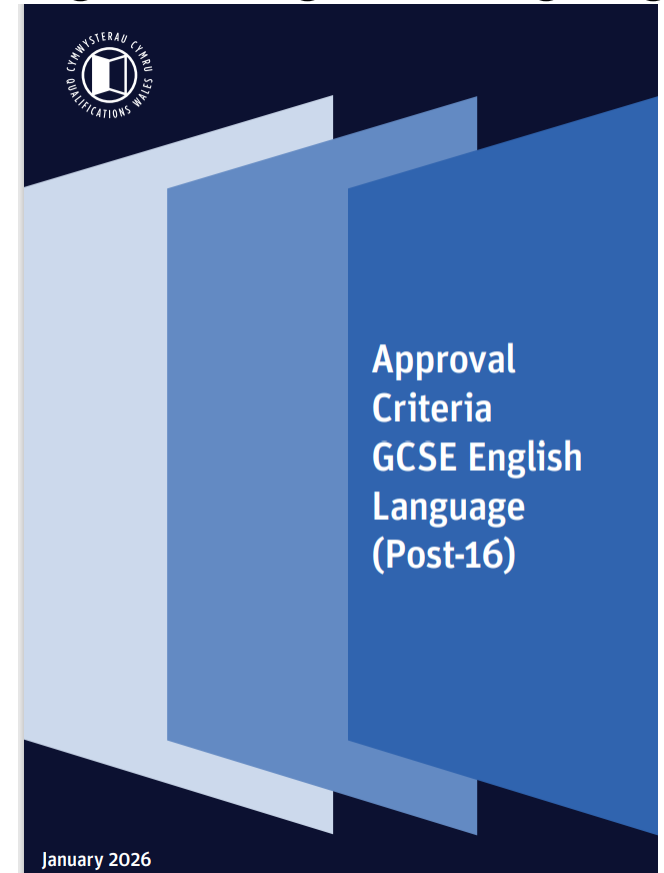


Gweithdai TGAU Cymraeg Iaith (ôl-16)

GCSE English Language/GCSE Welsh language (post-16)



[Approval-criteria-gcse-english-language-post-16.pdf](#)



GCSE Cymraeg language (post-16) workshops

Ton 3 – cyrff dyfarnu cydnabyddedig

Cyfrs Sgiliau (Lefel Mynediad 1 – Lefel 2)	Agored Cymru	King's Trust	Open Awards	Pearson	RSL Awards	TLM	CBAC
Sgiliau Bywyd a Sgiliau Gwaith	✓	✓	✓	✓		✓	✓
Prosiect Personol	✓	✓	✓		✓		✓

TAAU (Rhychwantu Lefel 1 a Lefel 2)	Agored Cymru	RSL Awards	TLM	VTCT Skills	CBAC
Adfer Natur	✓				
Adwerthu a Gwasanaethau Cwsmeriaid	✓				✓
Amaethyddiaeth, Garddwriaeth a Choedwigaeth	✓				✓
Amgylchedd Adeiledig	✓				✓
Busnes, Cyfrifeg a Chyllid	✓		✓		
Chwaraeon a Hamdden	✓			✓	✓
Cynhyrchu Creadigol a'r Cyfryngau, a Thechnoleg	✓		✓		✓
Cynnal a Chadw Cerbydau Modur	✓				
Gofal Anifeiliaid	✓				
Gwallt a Harddwch	✓			✓	
Gwasanaethau Cyhoeddus	✓				✓
Lletygarwch ac Arlwy	✓			✓	✓
Peirianneg	✓			✓	✓
Teithio a Thwrystiaeth	✓				✓
Y Celfyddydau Perfformio	✓	✓			✓

Sylfaen Cysylltiedig â Gwaith (Lefel Mynediad 1 – Lefel 1)	Agored Cymru	TLM	VTCT Skills	CBAC
Adfer Natur	✓			
Adwerthu a Gwasanaethau Cwsmeriaid	✓			✓
Amaethyddiaeth, Garddwriaeth a Choedwigaeth	✓			
Amgylchedd Adeiledig	✓			✓
Busnes, Cyfrifeg a Chyllid	✓	✓		
Chwaraeon a Hamdden	✓		✓	✓
Cynhyrchu Creadigol a'r Cyfryngau, a Thechnoleg	✓	✓	✓	✓
Cynnal a Chadw Cerbydau Modur	✓			
Gofal Anifeiliaid	✓			
Gwallt a Harddwch	✓		✓	
Gwasanaethau Cyhoeddus	✓			✓
Iechyd a Gofal Cymdeithasol, a Gofal Plant	✓			✓
Lletygarwch ac Arlwy	✓		✓	✓
Peirianneg	✓		✓	✓
Teithio a Thwrystiaeth	✓			✓

Sylfaen Cyffredinol (Lefel Mynediad 1 – Lefel 1)	Agored Cymru	Open Awards	TLM	CBAC
Cymraeg (Mynediad Lefel 1 – Mynediad Lefel 3)	✓			✓
Cymraeg Craidd (Mynediad Lefel 1 – Mynediad Lefel 3)	✓			✓
Dylunio a Thechnoleg	✓		✓	✓
Mathemateg a Rhifedd	✓	✓	✓	✓
Saesneg	✓	✓	✓	✓
Technoleg Digidol	✓		✓	✓
Y Celfyddydau Mynegiannol	✓			✓
Y Dyniaethau	✓			✓
Y Gwyddorau	✓			✓

Dynodi

Cynnydd

Wave 3 – recognised awarding bodies

Skills Suite (Entry Level 1 – Level 2)	Agored Cymru	King's Trust	Open Awards	Pearson	RSL Awards	TLM	WJEC
Skills for Life and Skills for Work	✓	✓	✓	✓		✓	✓
Personal Project	✓	✓	✓		✓		✓

VCSEs (Span Level 1 and Level 2)	Agored Cymru	RSL Awards	TLM	VTCT Skills	WJEC
Agriculture, Horticulture and Forestry	✓				
Animal Care	✓				
Built Environment	✓				
Business, Accounting and Finance	✓		✓		✓
Creative and Media Production, and Technology	✓		✓		✓
Engineering	✓			✓	✓
Hair and Beauty	✓			✓	✓
Hospitality and Catering	✓			✓	✓
Motor Vehicle Maintenance	✓				
Nature Restoration	✓				✓
Performing Arts	✓	✓			✓
Public Services	✓				✓
Retail and Customer Service	✓				✓
Sport, Leisure and Recreation	✓			✓	✓
Travel and Tourism	✓				✓

Work-related Foundation (Entry Level 1 – Level 1)	Agored Cymru	TLM	VTCT Skills	WJEC
Agriculture, Horticulture and Forestry	✓			
Animal Care	✓			
Built Environment	✓			✓
Business, Accounting and Finance	✓	✓		
Creative and Media Production, and Technology	✓	✓		✓
Engineering	✓		✓	✓
Hair and Beauty	✓		✓	✓
Health and Social Care, and Childcare	✓			✓
Hospitality and Catering	✓		✓	✓
Motor Vehicle Maintenance	✓			
Nature Restoration	✓			
Public Services	✓			✓
Retail and Customer Service	✓			✓
Sport, Leisure and Recreation	✓		✓	✓
Travel and Tourism	✓			✓

General Foundation (Entry Level 1 – Level 1)	Agored Cymru	Open Awards	TLM	WJEC
Core Cymraeg (Entry Level 1 – Entry Level 3)	✓			✓
Cymraeg (Entry Level 1 – Entry Level 3)	✓			✓
Design and Technology	✓		✓	✓
Digital Technology	✓		✓	✓
English	✓	✓	✓	✓
Expressive Arts	✓			✓
Humanities	✓			✓
Mathematics and Numeracy	✓	✓	✓	✓
The Sciences	✓			✓

Designation

Progression

CWESTIYNAU? **QUESTIONS?**

Diolch yn fawr
Thank you